

Reapportionment

Article I of the Constitution directs Congress to **reapportion**—redistribute—the seats in the House after each decennial census.

- House grew while US grew
- Reapportionment Act of 1929
- The balancing act



Go To
Section:

1

2

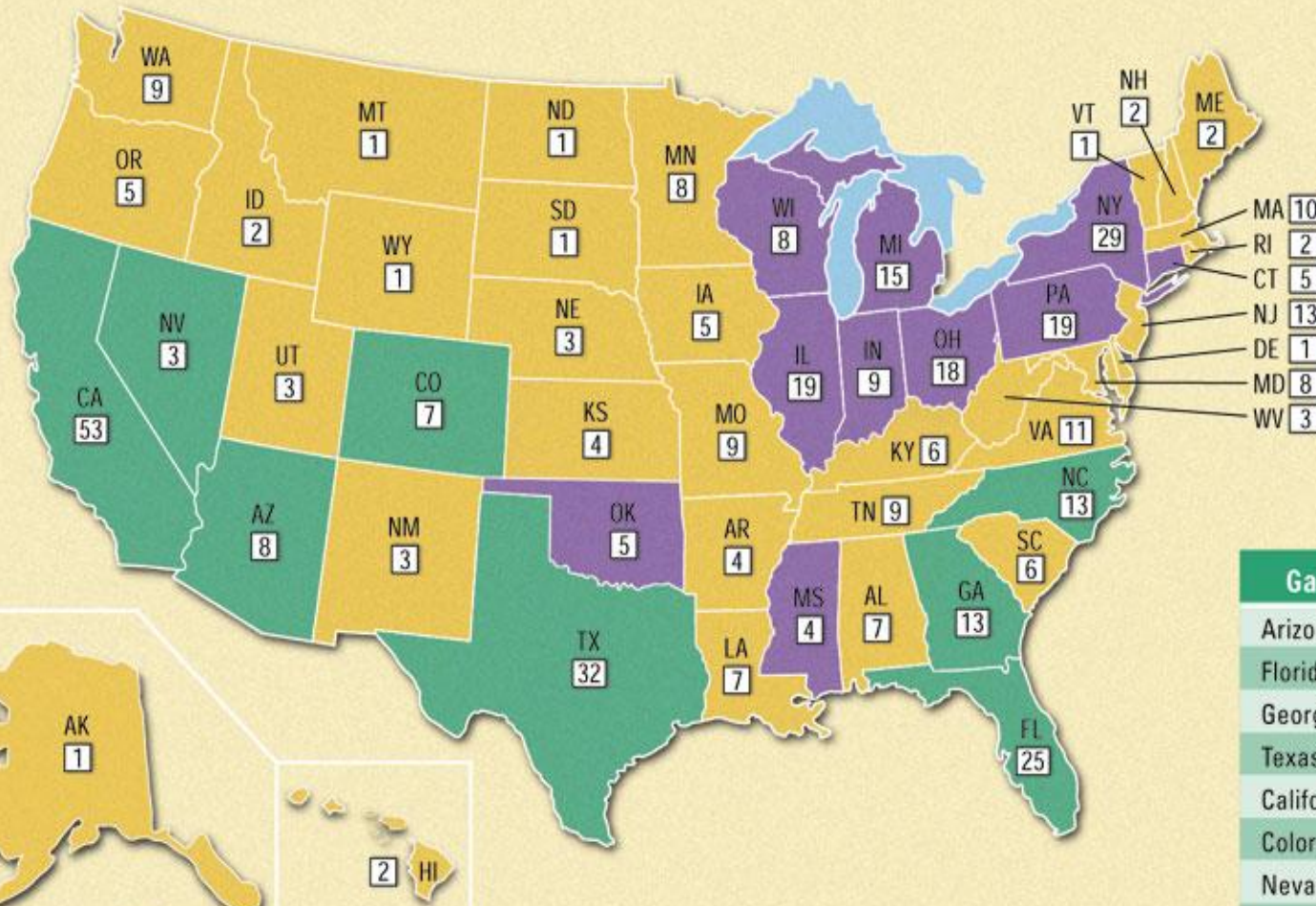
3

4

Chapter 10, Section 2

Apportionment: Congress

Congressional Apportionment, 2003-2013



KEY

- Gained representation
- Lost representation
- No change

2 Number of Representatives

Gained Seats		Lost Seats	
Arizona	+2	New York	-2
Florida	+2	Pennsylvania	-2
Georgia	+2	Connecticut	-1
Texas	+2	Illinois	-1
California	+1	Indiana	-1
Colorado	+1	Michigan	-1
Nevada	+1	Mississippi	-1
North Carolina	+1	Ohio	-1
		Oklahoma	-1
		Wisconsin	-1

SOURCE: Census 2000

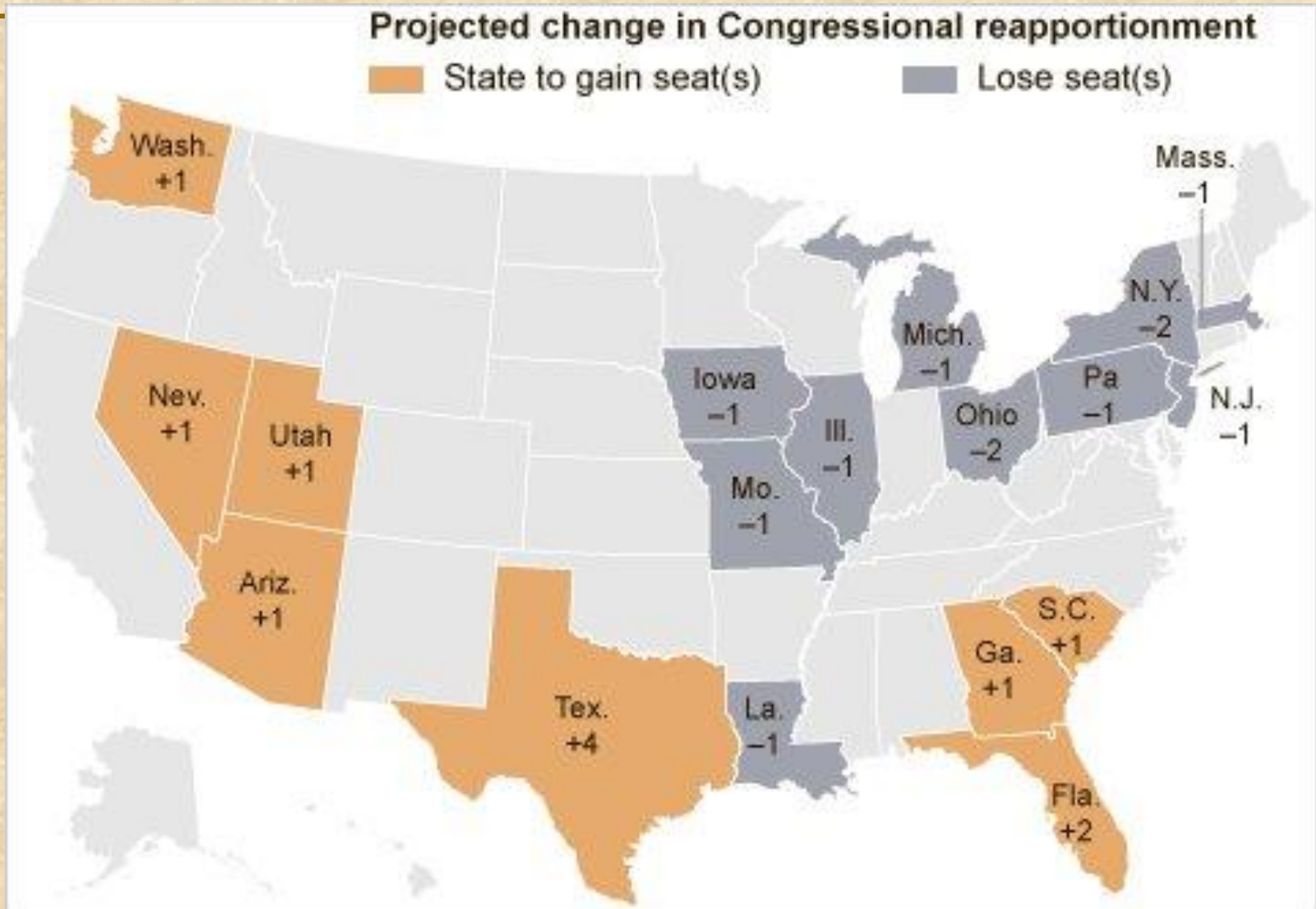


Go To Section:

1
2
3
4

Chapter 10, Section 2

Projected Reapportionment



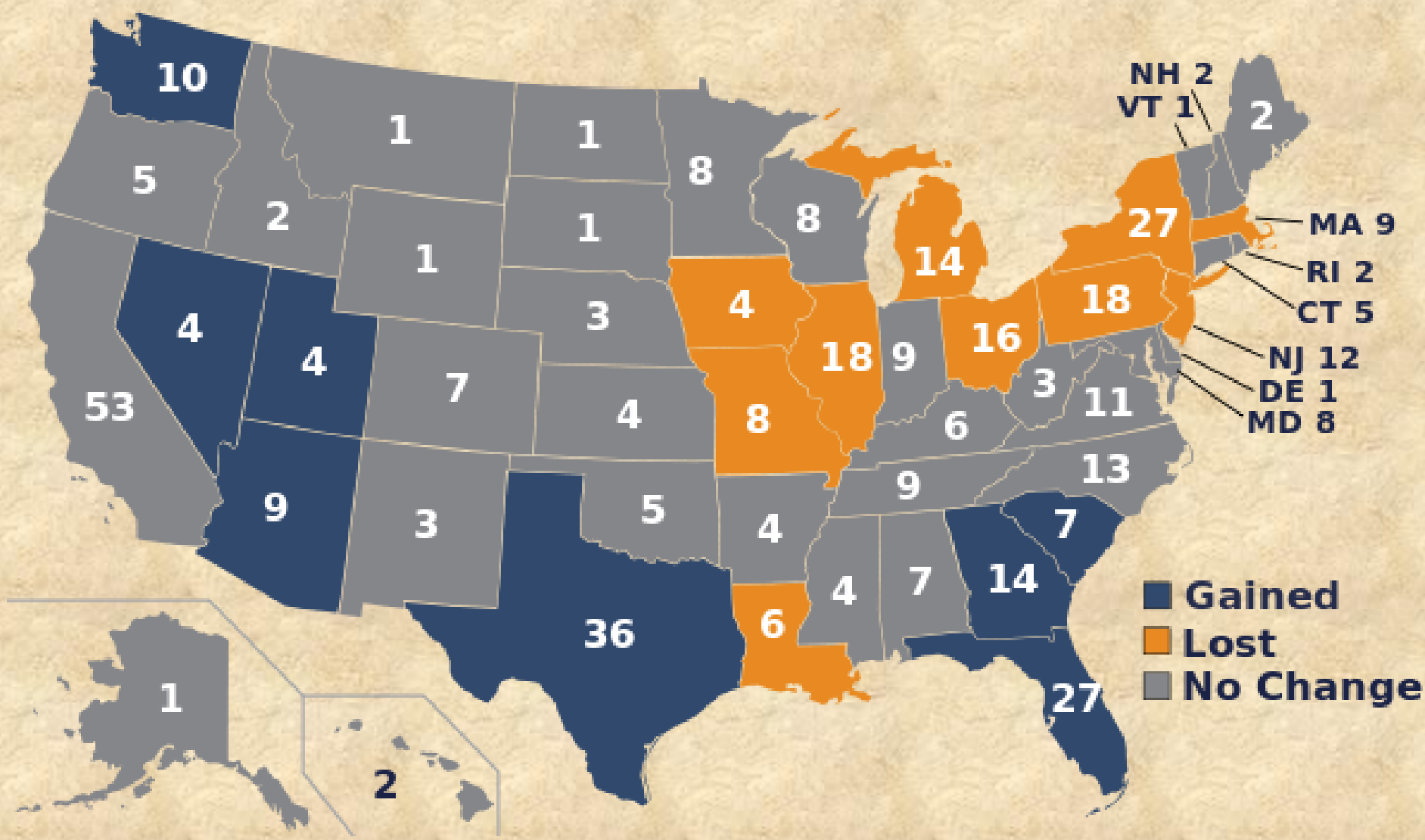
Go To
Section:

1

2

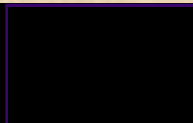
3

4



Go To Section:

- 1
- 2
- 3
- 4

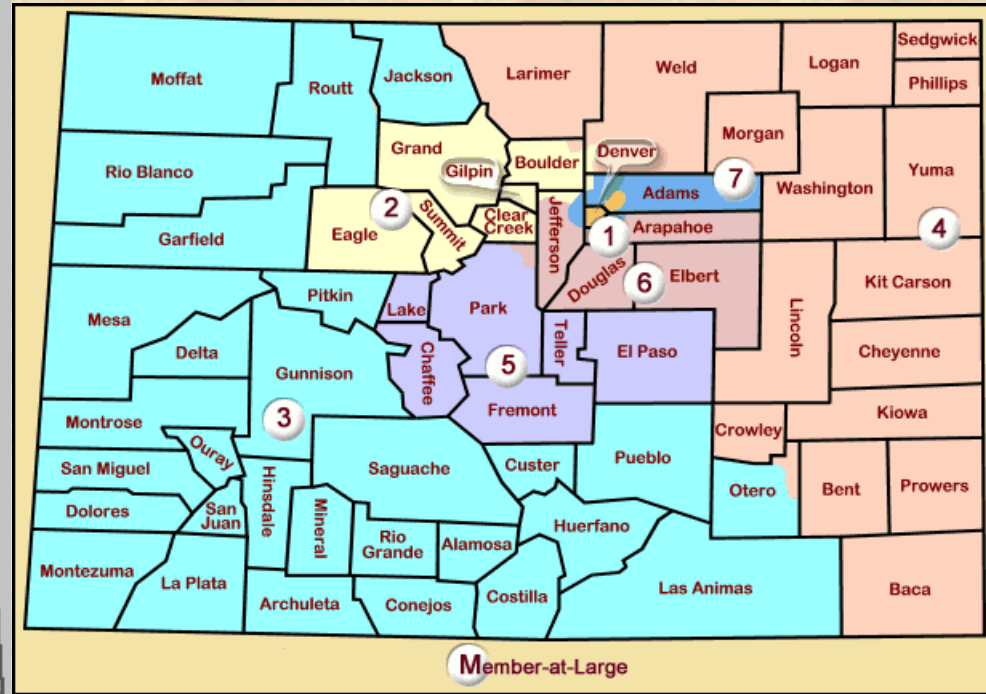
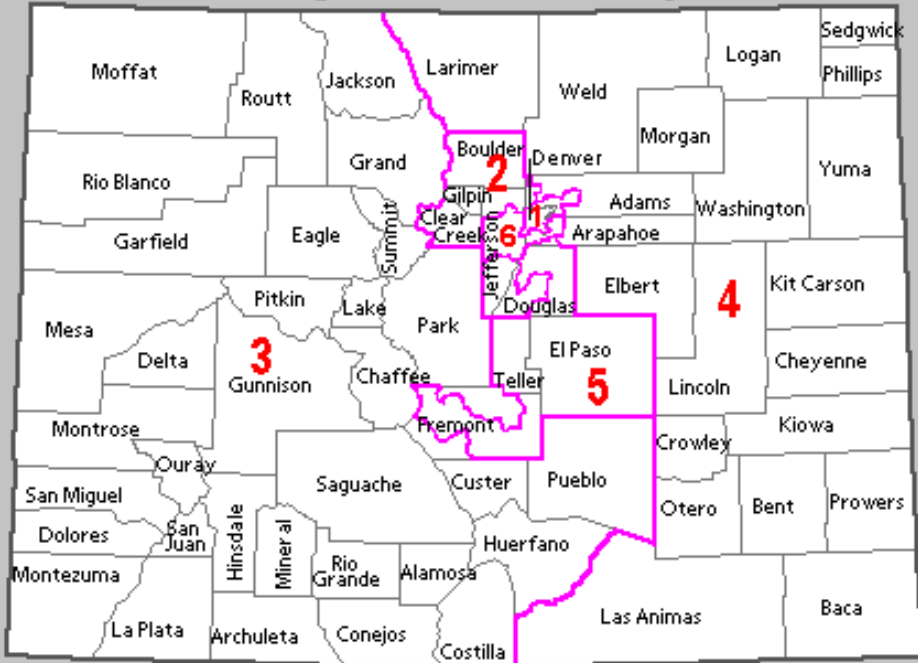


Redistricting: State Legislatures

1990 census

2000 census

Congressional District Map



The U.S. has single-member districts



Go To Section:

1

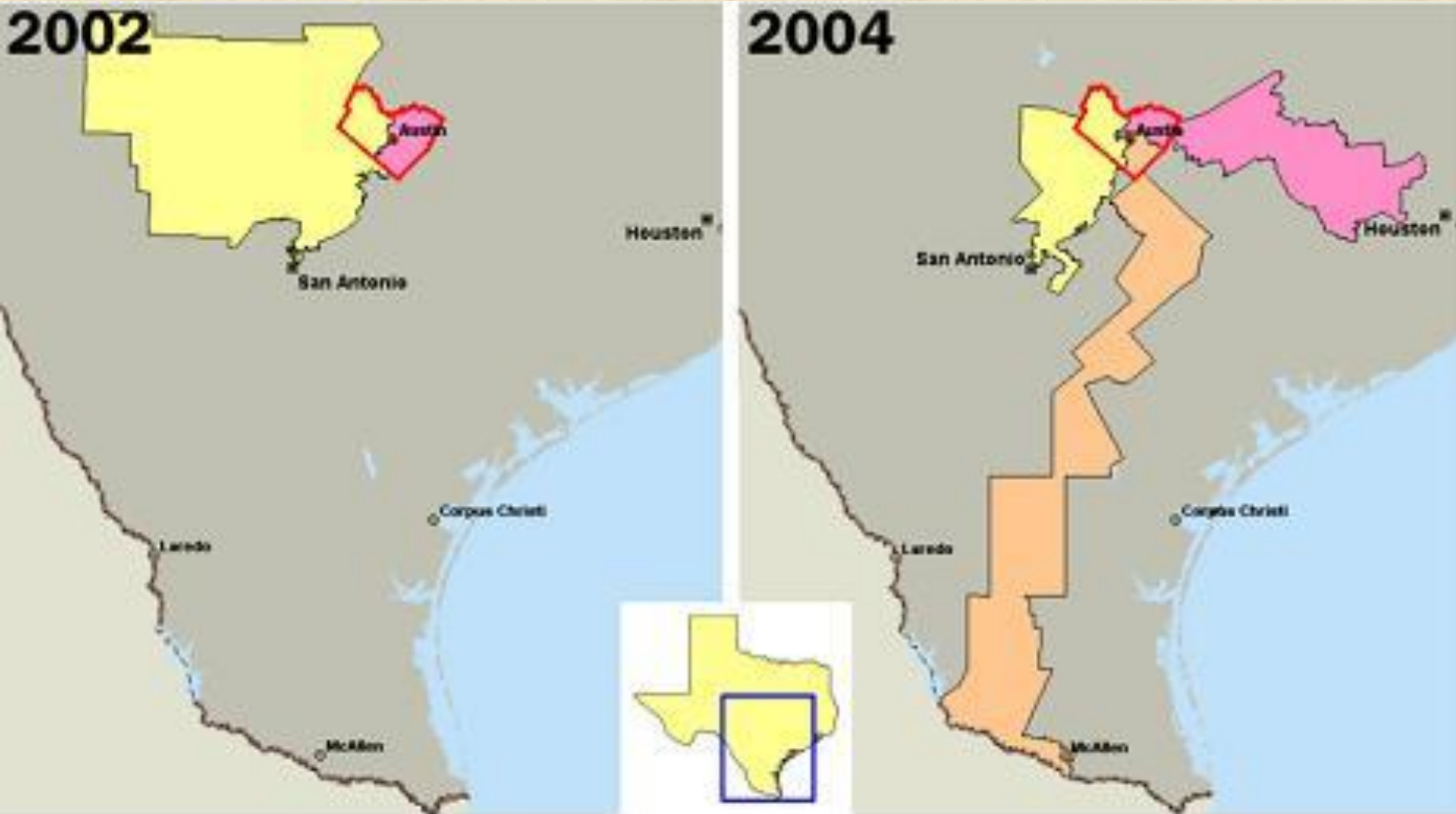
2

3

4

Chapter 10, Section 2

Texas gerrymandering



Go To
Section:

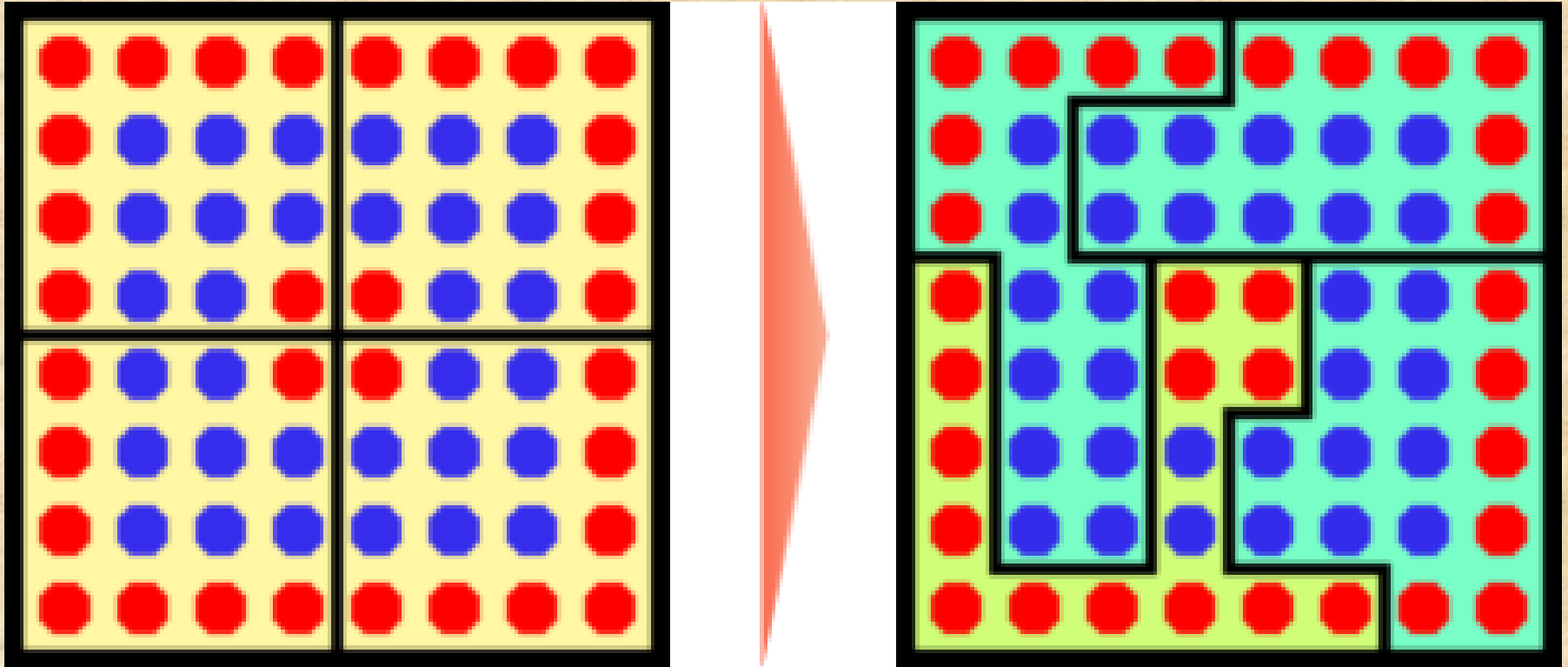
1

2

3

4

Gerrymandering



Go To
Section:

1

2

3

4